

TOURING IN  
Taisclann  
EUROPE

Ollscoil na Gaillimhe

Taisclann  
Ollscoil na Gaillimhe



AUGUST 1957.

THE TOWERS OF BRUGES.



OLD BRUGES, BELGIUM.

# Taisclann

# Ollscoil na Gaillimhe

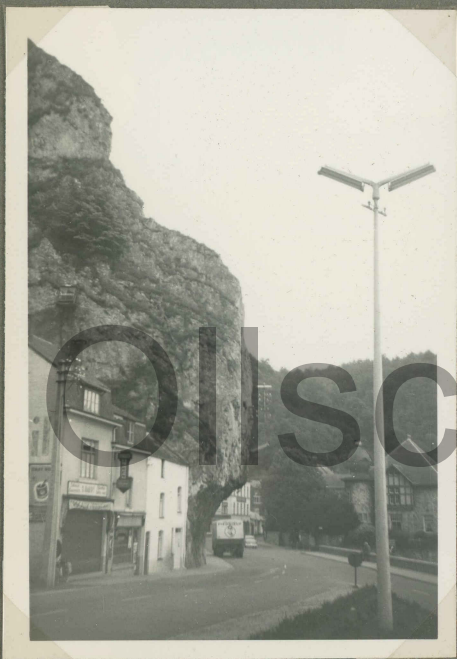


THE APPROACH TO THE  
FERRY AT  
AAROSUND, DENMARK.



NAMUR CITADEL '58-'59  
BELGIUM.

ROMAN OFFICER'S MEMORIAL  
TO A SON DROWNED IN THE



CLIFFS BY R. MEUSE  
AT DINANT  
1958-59.

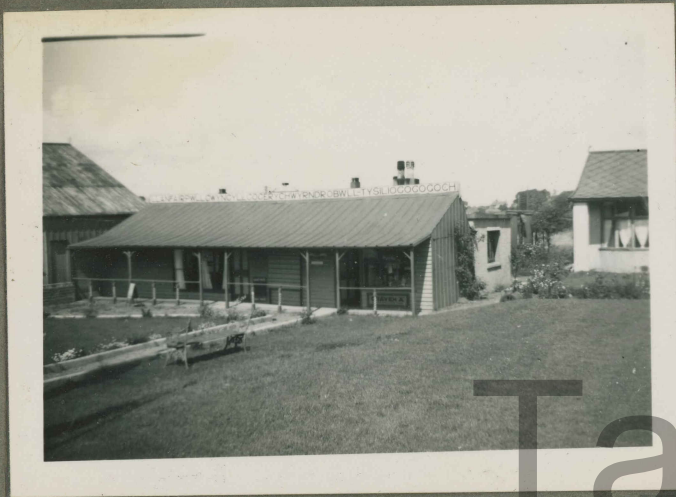


CLIFFS BY R. MEUSE  
& ROAD AT DINANT,  
BELGIUM '58.



MOSELLE AT COLONNE (ON  
WEG 49 GERMANY) AUG. '58.

WALES.



ANGELSEY VILLAGE ... R.P.



CARDIGAN HIGH  
STREET 1952.  
R.P.



TOP OF THE NANT IFRANCAN  
PASS BY A 5, 1952.



VIEW FROM A5 WEST NEAR  
PEN-Y-BENCLOG, 1952.



VIEW FROM A5 NEAR BETHESDA  
LOOKING S. WITH A SLATE-  
QUARRY ON THE RIGHT.

# Ollscoil na Gaillimhe



MENIA STRAITS BRIDGE FROM  
ANGLESEY.



K.H.L.  
APRIL 1954.



PORHTCAWL SANDY  
BAY



VIEW N. FROM PORHTCAWL.





THE ROAD TO BRECON.

A U-VALLEY IN THE  
BRECONS.

IN THE BRECONS.



Faisclann  
Ollscoil na Gaillimhe



# Taisclann

## Ollscoil na Gaillimhe



rider resembles Arthur Scruton.



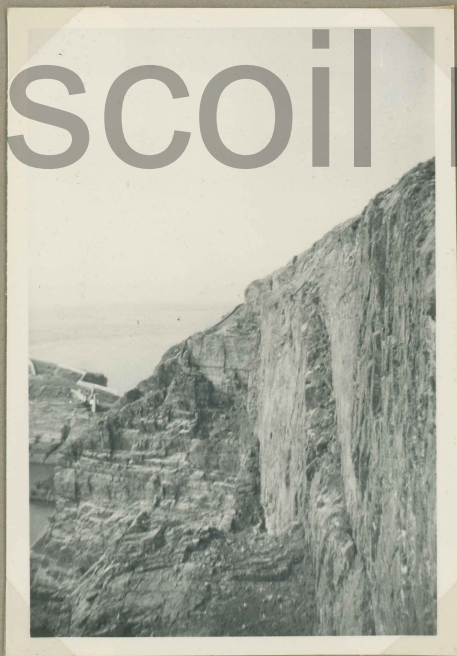


I. OF ANGLESEY  
SOUTH STACK  
SPRING '59.

LIGHTHOUSE & SUSPENSION  
BRIDGE.



HOLY ISLE & LIGHTHOUSE  
NOTE ROCK STRATA.



LOOKING S.-W. AT  
FAULTED ROCKS.



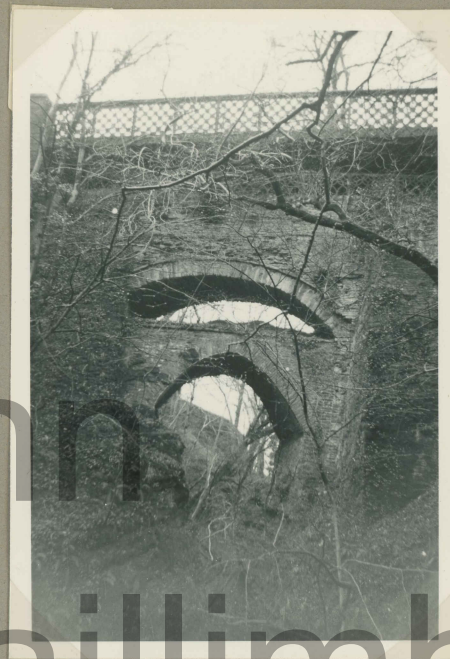
LOOKING S.E.

Taisclann  
Ollscoil na Gaillimhe

WALES APRIL  
1959.



LLANDERIS PASS  
LOOKING N.-W.



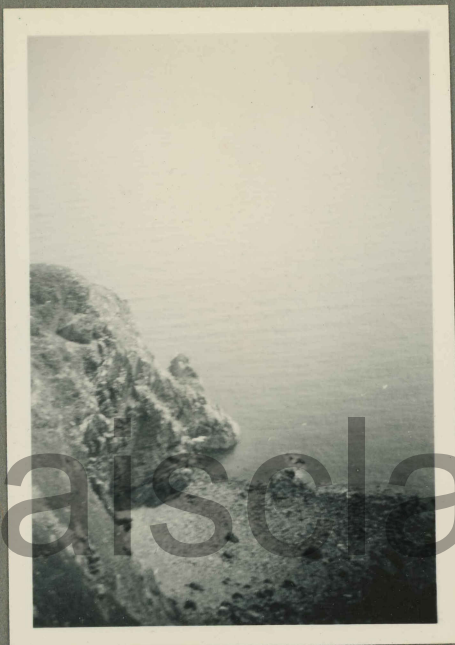
DEVIL'S BRIDGE



VIEW N.-W. ACROSS THE  
GWAUN VALLEY, N. OF FISHGUARD.



GWAUN VALLEY WITH  
IN II HILL ROAD TOP BACKGROUND



ROCKS AT MAUGH-  
HOLD HEAD I.O.F.M.



VIEW OF GLENARM BAY  
FROM N. NORTHERN IRE-  
LAND APRIL, 57.



VIEW S.W. FROM SOUTH  
BARRULE, I.O.F.M.

ISLE OF MAN  
APRIL '57.



NORTH OF THE ISLE OF  
MAN FROM BOAT.



HEADLAND S. OF DOUGLAS  
FROM THE BOAT.



PEEL CASTLE.

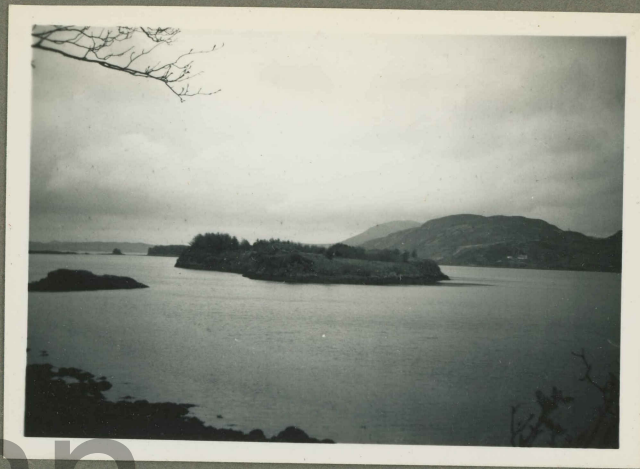


SNAEFELL FROM NEAR  
BRIDE.

NORTHERN IRELAND  
APRIL '57.



BASALT OVERLYING  
LIMESTONE BY A2  
ANTRIM COAST ROAD.



SEA LOCH NEAR MILFORD,  
EIRE.



VIEW W. FROM GIANTS' CAUSEWAY.



VIEW E. OF GIANTS'  
CAUSEWAY TO "THE  
ORGAN PIPES."



BELFAST AIRPORT  
NUTTS CORNER.



MOURNE MTS. FROM  
NEAR MINERSTOWN.



PEAT BOG NEAR  
OMAGH.

VIEW FROM BALL  
HILL Y.H., DONEGAL.



GREY FRIARS ABBEY  
NORTHERN IRELAND.



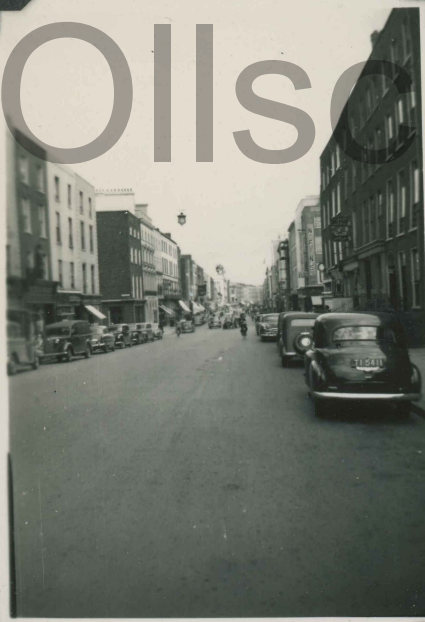
I R E L A N D



LISMORE CASTLE, 1952



DUNGARVAN, 1952.



O'CONNELL STREET,  
LIMERICK, 1952.



DUBLINS DOCKS ON THE  
RIVER LIFFY, 1952.

PHOTOS: R. PALMER.



KILLARNEY CATHEDRAL,  
1952.

PHOTOS: R.P.



LOUGH LRANE & MACGILLY-  
CUDDY'S REEKS, KILLARNEY,  
1952.



KILLARNEY & MACGILLYCUDDY'S  
REEKS, 1952.



R. SHANNON (NEAR THE AIRPORT),  
1952.



FORTH BRIDGE FROM A  
QUEENSFERRY BOAT.

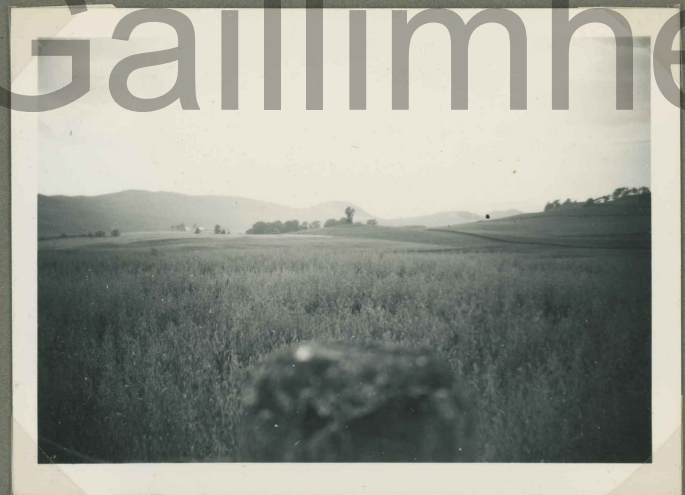


SCOTLAND  
AUGUST  
1955.  
K.H.L.



TAY VALLEY NORTH OF  
PERTH.

MOUNTAINS NEAR GLEN  
SPEE.



NEAR GLEN SPEE, WITH  
A BOULDER IN FOREGROUND.

THE TOP OF THE DEVIL'S  
ELBOW PASS.



THE JOHN O'GROATS ROAD  
SOUTH OF DINGWALL.



MOUNTAINS NEAR GLEN  
CARRON, A FRESH WATER  
LOCH.



MOUNTAINS WEST OF  
STRATHPEFFER. NOTICE THE  
DRYING PEAT LEFT OF THE  
CYCLE.



STROME FERRIES - AT LOW  
TIDE - WITH CARS ON  
SWIVEL DECKS.



PORTREE, SKYE, LOOKING  
EAST TO RAASAY THROUGH  
A "FIORD."



VIEW N.-W. FROM ROAD AT  
FOOT OF RED HILLS, SKYE,  
SHOWING A SEA LOCH.



VIEW N.-E. FROM THE RED  
HILLS, SKYE, SHOWING IS-  
LANDS, INCLUDING SCALPAY.



THE ASCENT OF GLEN  
COE.



OCEAN GOING STEAMER  
GOING TO KYLE OF LOCALSH  
THROUGH THE KYLE RHEA.





STEIN GLACIER &  
LAKE 1960.



VIEW SOUTH FROM GLETSCH



SNOUT OF STEIN  
GLACIER 1960.

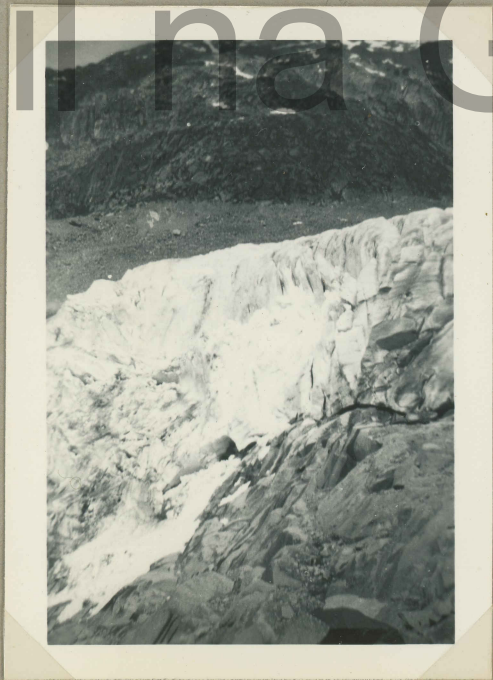
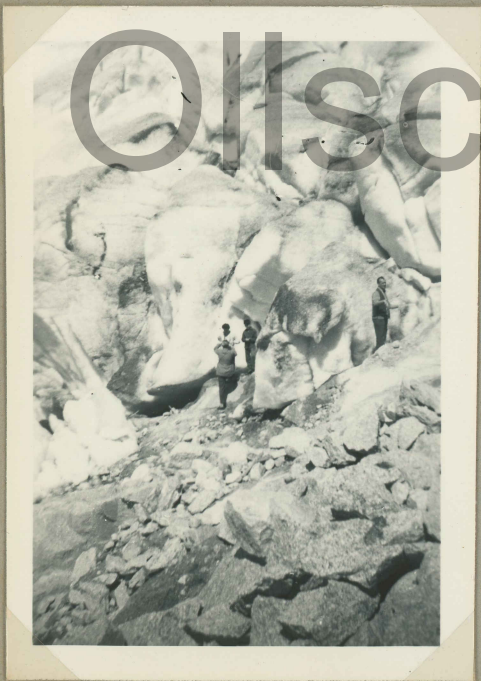
# Ollscoil na Gaillimhe



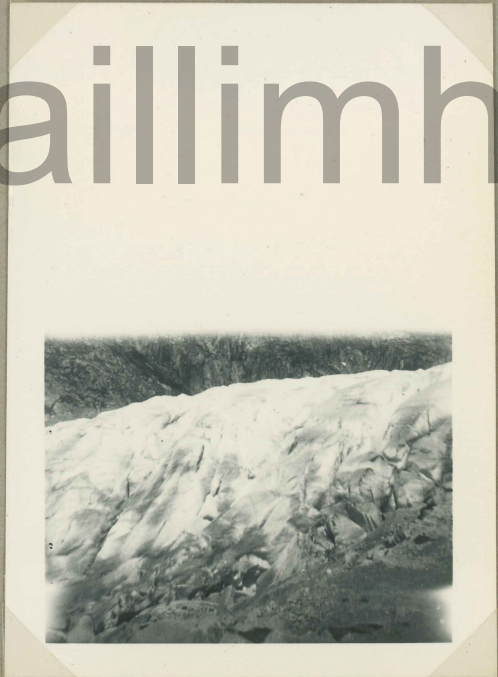
THE RHONE GLACIER FROM  
THE POLY COACH.

RHONE GLACIER  
VIEW N-W. BELOW  
GROTTO.

BED & CREVASSES  
OF RHONE GLACIER  
SNOUT.



RHONE GLACIER SNOUT.



Ollscoil na Gaillimhe

SWITZERLAND.



PAINTED HOUSE  
FRONT IN OLD  
LUCERNE (WEGGIS-  
GASSE).



ANOTHER VIEW  
OF THE WEGGIS-  
GASSE LUCERNE.

TOP CENTRE:  
WEGGISGASSE



LEFT:  
WAGGENBACH  
FOUNTAIN.

1959.

THE STEIN GLACIER  
FROM THE SUMMIT  
OF THE SUSTEN PASS,  
AUGUST, 1959.



Taisclann

CLOUD MOVING UP THE  
R. AAR. VALLEY TO STEIN.



SNOUT OF STEIN GLACIER  
WITH ITS STREAM.



Ollscoil na Gaillimhe





SUSTEN PASS IN  
AUGUST, 1959.

STEIN GLACIER & LAKE.  
(STREAM SHOWN ON  
OPPOSITE PAGE).



NOTE FRESH SNOW  
ON MOUNTAINS BY  
SUSTEN PASS, DESPITE  
THE HOT WEATHER.

JOCH PASS  
& TITLISS  
ALPS FROM  
TRÜBSEE, Nr.  
ENGELBERG,  
AUGUST,  
1959.



VIEW E. FROM  
FLÜELEN,  
WITH CHURCH  
& MT. ROSSTOCK



VIEW W.  
FROM  
FLÜELEN,  
WITH  
CLOUD  
CROSSING  
MT. URI.



VIEW S.  
FROM THE  
TRÜBSEE  
SHOWING  
SNOW & ICE  
PATCHES.





VIEW FROM  
SPHINX  
OBSERVA-  
TION  
TOWER  
11,723.



VIEW WEST  
FROM  
SPHINX.

# Taisclann Oilscoil na Gaillimhe



FROM  
SPHINX  
VIEW  
SOUTH  
ACROSS  
ALETTS  
GLACIER  
TO ITALY.

VIEW ACROSS  
EIGER GLACIER  
TOWARDS ITALY.



# Taisclann



AUG. '60. VIEW AT JUNGFRAU-  
JENN FROM RAILWAY COM-  
PANY EXIT

VIEW S. FROM BEAUSITE HOTEL  
WITH SNOWCAP OF FINSTER AARHORN  
BEYOND LOWER GRINDELWALD GLACIER.

# Ollscoil na Gaillimhe