

Taisolann

Ollscoil na Gaillimne

Photographs





YAIR BRIDGE + FAIRNILEE WATER
SELKIRK - PEEBLES ROAD. SELKIRK



FAIRNILEE WATER + BUGLE LODGE.



RIVER TWEED NEAR PEEL HOSPITAL
SELKIRK - PEEBLES ROAD. PEEBLES.



RIVER TWEED + BRIDGE TO PEEL HOSPITAL



FROM NEWTON BRIDGE IN THE SMA' GLEN,
CRIEFF - ABERFELDY ROAD, PERTH.



THE SMA' GLEN, CRIEFF - ABERFELDY ROAD



THE FALLS OF MONESS, ABERFELDY,
A PLEASANT WALK

THE MIDDLE
FALLS



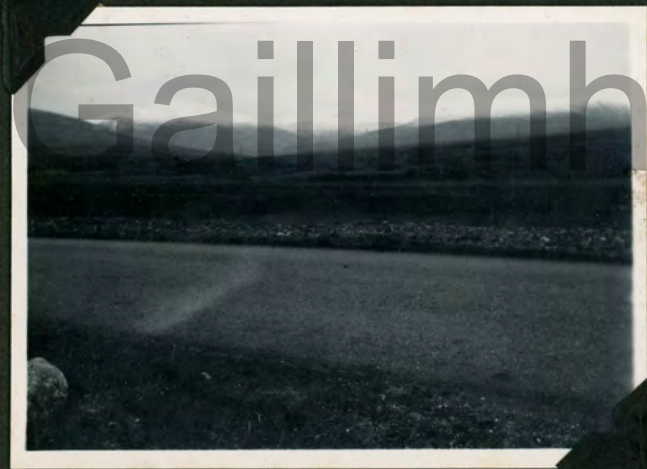


WOODLAND PATH & SNOW-COVERED MOUNTAINS
NEAR UPPER FALLS.



LOOKING DOWN THE UPPER FALLS
FROM THE BRIDGE.

THE UPPER
FALLS.



SNOW ON THE MTS. NEAR DALWHINNIE.



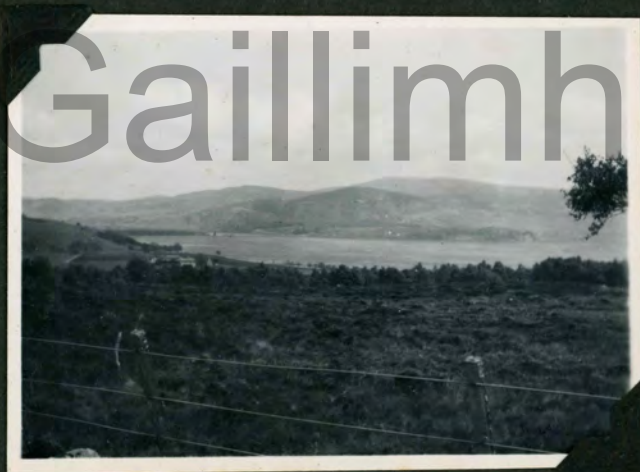
LOCH INSH. INVERNESS.



VIEW NEAR AVIEMORE



ROADSIDE POOL NEAR AVIEMORE



ON THE DORNOCH-GOLSPIE RD.



FROM "THE MOUND".



COASTLINE NEAR HELMSDALE



NEAR BERRIEDALE, COAST & SEA IN DISTANCE
CAITHNESS.



BERRIEDALE, BRIDGE & MONUMENT.



SEASHORE NEAR STRATH, SUTHERLAND.



RIVER



THE COAST NEAR BETTYHILL



THE OLD ROAD & BRIDGE, NEAR TONGUE.



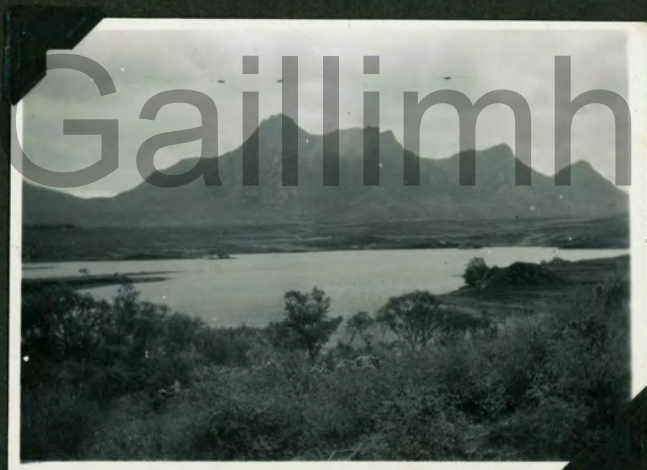
BEN LOYAL NEAR TONGUE, ON TONGUE-DURNESS ROAD.



ANOTHER VIEW OF BEN LOYAL



LOCH



BEN LOYAL AND LOCH

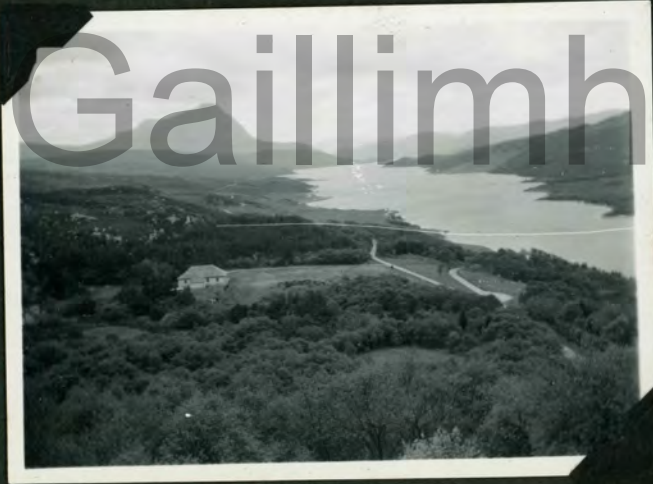
BEN LOYAL AND
KYLE OF TONGUE
FROM A SMALL
WATERFALL NEAR
THE ROAD.



A SMALL
WATERFALL, KYLE
OF TONGUE, AND
BEN LOYAL



THE ROAD ROUND THE KYLE OF TONGUE.



AT HOPE, BEN HOPE AND



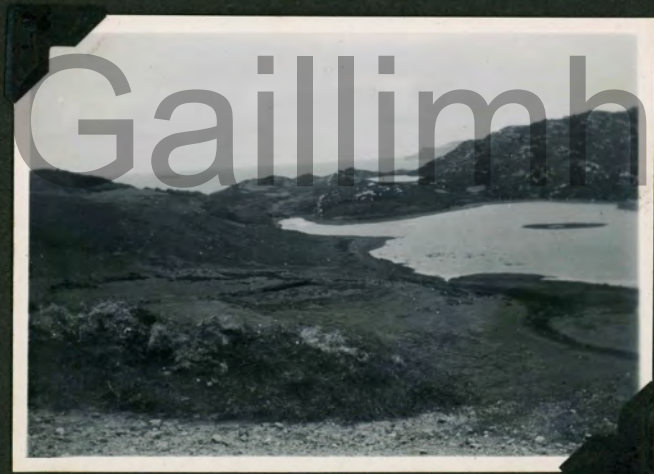
HOPE, BEN HOPE AND



BEN HOPE AND



LOOKING SEAWARDS ON THE CLIMB OUT OF HOPE TO LOCH ERIBOLL AND DURNESS.





VIEW SEAWARDS FROM TOP OF ROAD OUT OF HOPE.



LOCH ERIBOLL AND HEILIMM PT.



THE HEAD OF LOCH ERIBOLL



SMALL RIVER RUNNING INTO HD. OF LOCH ERIBOLL,
RIVER POLLA



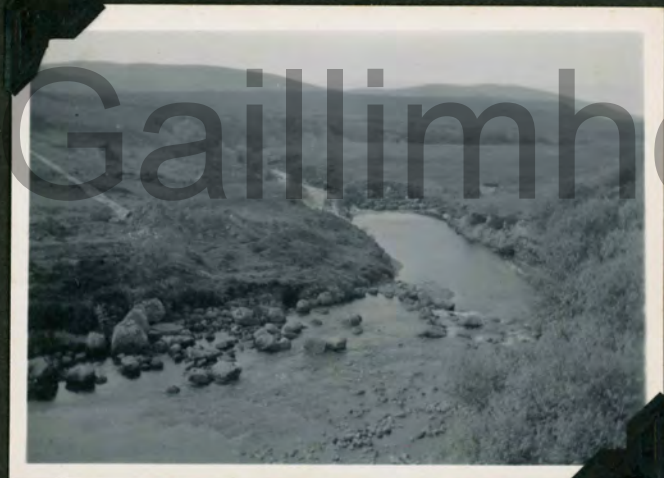
THE COAST NEAR DURNESS AFTER ROUNDING
LOCH ERIBOLL



COASTLINE NEAR DURNESS.



COAST AND SMALL ISLANDS NEAR DURNESS



ON THE DURNESS - SCOURIE ROAD.
RIVER DIONARD. SUTHERLAND.



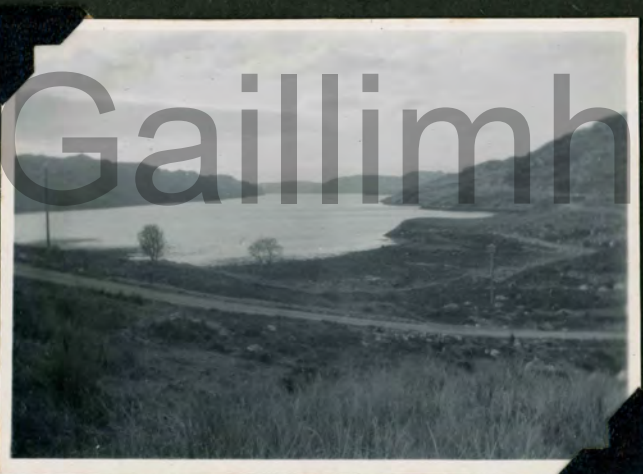
DURNESS - SCOURIE ROAD. FARVEALL,
AND FARRMHEALL.



SMALL LOCH NEAR RHICONICH.



NEAR RHICONICH ON DURNESS - SCOURIE RO.



AT RHICONICH. LOCH INCHARD



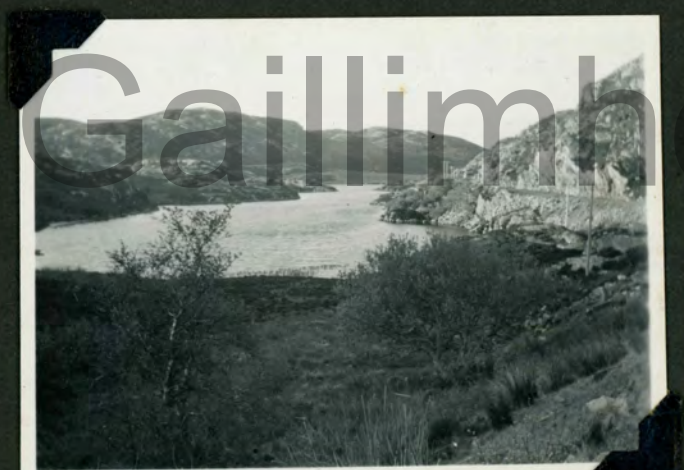
NEAR RHICONICH. CEANN MOR
2980.



LOCH NA CAILLICH.



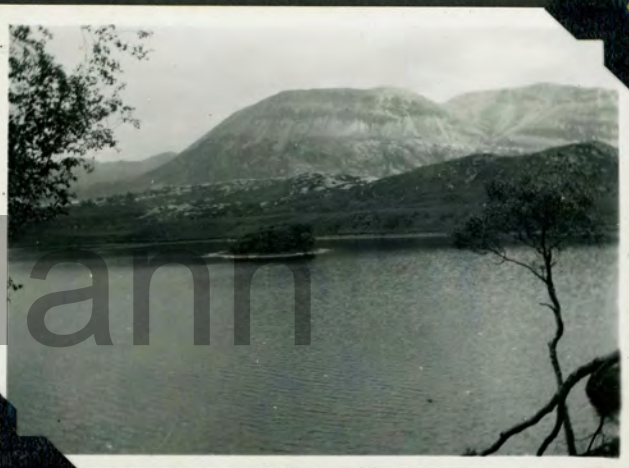
LOCH NA H ULA .



LOCH NA H ULA.



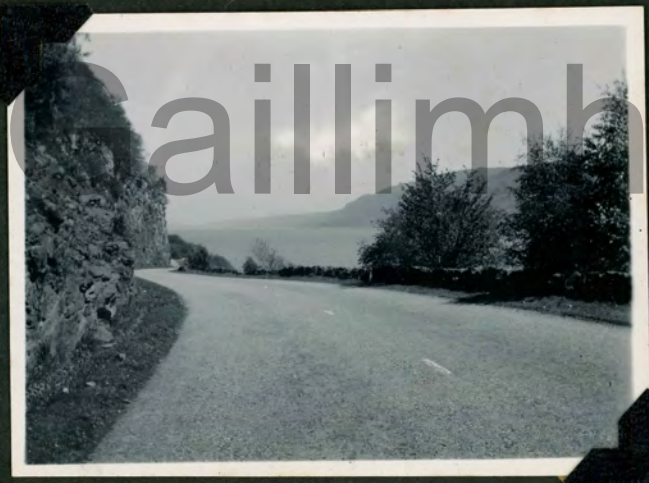
THE ROAD TO SCOURIE, NEAR LAXFORD
BRIDGE.



LAXFORD BRIDGE - LAIRG, LOCH STACK,
AND ARCHIL.



LOCH MORE AND
LAXFORD BRIDGE - LAIRG, RD.



LOCH NESS, INVERNESS - FORT AUGUSTUS
ROAD,
INVERNESS



LOCH NESS.



INVERNESS - FORT AUGUSTUS, LOCH NESS.

INVERNESS.



SMALL RIVER RUNNING UNDER OLD ROAD AND BRIDGE.
INVERNESS - FORT AUGUSTUS ROAD



SMALL WATERFALL UP THE SIDE
OF LOCH NESS.

RIVULET RUNNING
DOWN INTO
LOCH NESS.



A CLOSE VIEW
OF SMALL
WATERFALL
DROPPING DOWN
TO LOCH NESS.



LOCH LOCHY, NEAR INVERGARRY,
FORT AUGUSTUS - FORT WILLIAM.



BEN NEVIS RANGE, NEAR SPEAN BRIDGE.



BEN NEVIS, NA SPEAN BRIDGE



BEN NEVIS, NR. FORT WILLIAM. 4406'



ENTRANCE TO GLEN COE,
ARGYLL

WATERFALL
IN
GLEN COE.



ON THE CRIANLARICH
TO LOCH LOMOND
ROAD.



ROCKY PASSAGE
FROM ROUGH
BRIDGE OVER
RIVER



LOCH LOMOND, AND
PEAK OF DEN LOMOND.



SO, BY THE PEACEFUL
BANKS OF LOCH LOMOND
ENDS THIS PICTORIAL
RECORD OF THIS YEAR'S
(1950) TOUR IN
SCOTLAND.

1946. TOUR.

YORKSHIRE.

1st July - 17th.



KIRKHAM ABBEY



FLAMBOROUGH HEAD



SEA-WORN CLIFFS AT FLAMBOROUGH
HD.



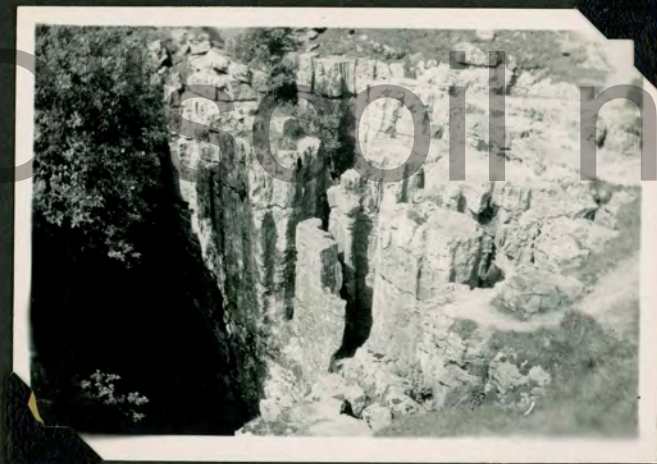
WHITBY ABBEY.



RIVEAULX ABBEY



SWALEDALE, FROM START OF BUTTERTUBS
PASS.



THE BUTTERTUBS.



KISDON FORCE.

MALHAM
COVE



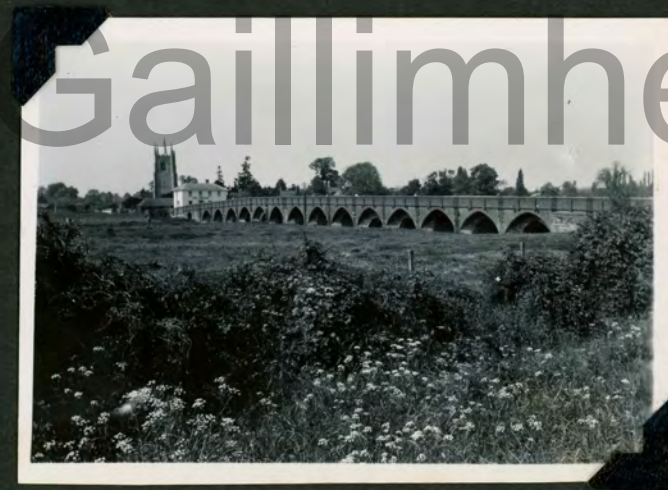
END OF TOUR.



IN THE WOODS, NEAR BURGH HEATH
AND REIGATE, SURREY.



WATEREND FORD, HERTS.



GRT. BARDFORD BRIDGE AND CHURCH
BEDS.

1947 TOUR

EIRE

13TH JUNE - 29TH.



NEAR "THE SCALP"



AT THE FOOT OF POWERSCOURT
WATER FALL.



POWERSCOURT WATERFALL.



IN THE DARGLE GLEN.



GLENDALOUGH. ROUND TOWER + OLD RUINS.



GLENDALOUGH. THE LOWER LAKE.



THE UPPER LAKE.



THE VALE OF CLARA.



LISMORE CASTLE. WATERFORD

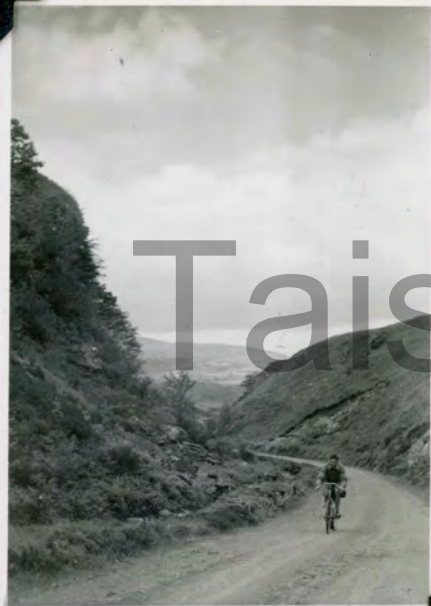


ON A ROAD BETWEEN MACROOM AND
INCHIGEELAH,
CORK.



DUNCARVAN ABBEY CHURCH.
WATERFORD.

THE PASS OF
KEIMANEIGH.



GARRIGANASS CASTLE RUINS.



RIVER LEE, NEAR BEALANAGARY



RIVER LEE, NEAR INCHIGEELAH.



THE SHEEN RIVER, NEAR KENMARE,
KERRY.



BANTRY BAY, NEAR GLENGARIFF, CORK.



ON THE ROAD TO WINDY GAP, CORK.



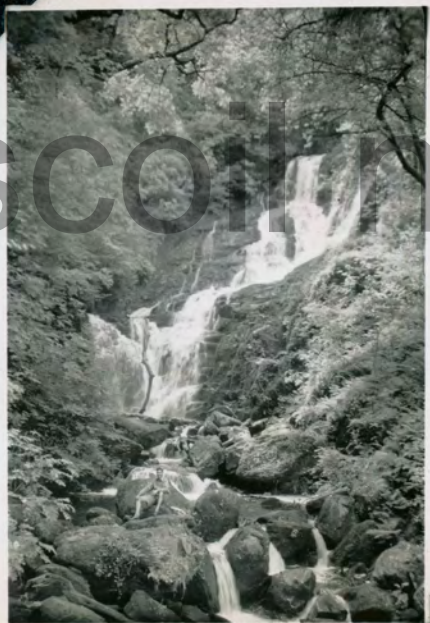
NEAR WINDY GAP.



ON THE ROAD FROM WINDY GAP TO KILLARNEY,



THE LAKES OF KILLARNEY, KERRY.



TORC CASCADE,
NEAR
KILLARNEY,
KERRY.



THE GAP OF DUNLOE, AND MACGILLYCUDDY'S
REEKS.

KERRY.



OLD STONE CIRCLE, GAP OF DUNLOE.



IN THE GAP OF DUNLOE.



THE SENTINEL
ROCKS, IN THE
GAP OF DUNLOE.



AT THE HEAD OF THE GAP OF DUNLOE.



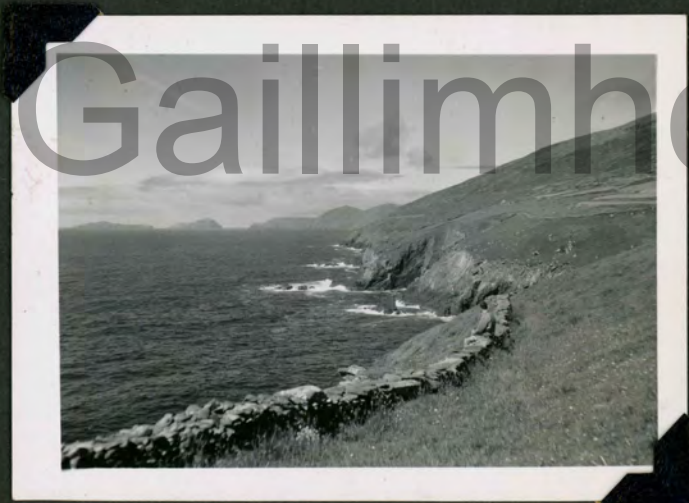
CUMMEENDUFF GLEN, FROM HD. OF GAP OF
DUNLOE.



A WAYSIDE MEAL, NEAR KILLARNEY, KERRY.



LOOSCANNAGH LOUGH.



SLEA HEAD, AND THE BLASKET ISLANDS,
DINGLE PENINSULA. KERRY.



IRISH SCENE AT TEERAVANE. DINGLE PENINSULA
KERRY.



AMONG THE CLOUDS ON CONNOR HILL.



RATHKEALE
CASTLE TOWER
RUINS.



DESMONDS CASTLE RUINS. AODARE.



DESMONDS CASTLE RUINS, ADARE.



ADARE CHURCH.



LOUGH DERG, NEAR KILLALOE,
TIPPERARY.



LOUGH DERG, TIPPERARY.



THE VILLAGE OF PORTROE.

THE ROUND
TOWER.
NEENAGH,
TIPPERARY.



INSIDE AND TOP OF ROUND TOWER.
NEENAGH. TIPPERARY.



MONASTERVIN CHURCH FROM THE GROUNDS
OF MOORE ABBEY.



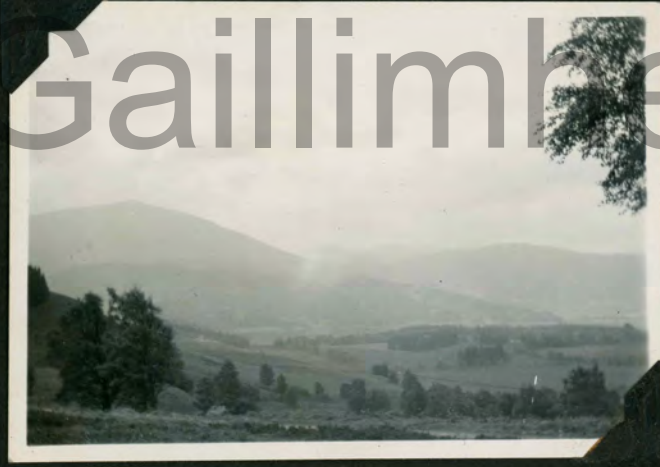
ALNWICK CASTLE, NORTHUMBRELAND.



FORTH BRIDGE. QUEENSFERRY.
MIDLOTHIAN



RIVER TUMMEL. DUNKELD-PITLOCHRY RD.
PERTH.



DUNALASTAIR MT. AND RESERVOIR



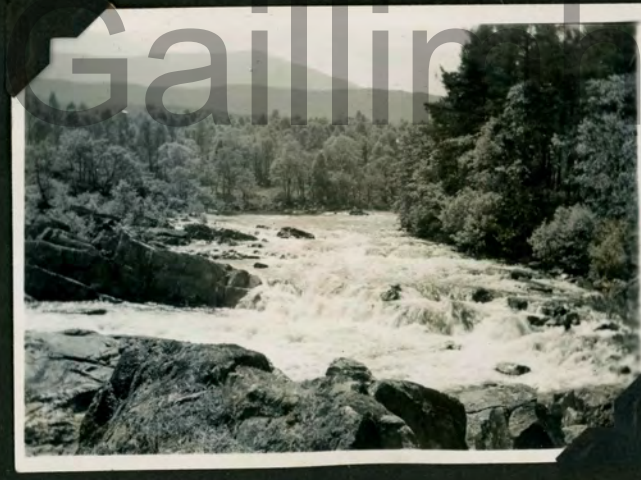
DUNALASTAIR RESERVOIR.



A DAM ON THE RIVER TUMMEL



RAPIDS ON THE RIVER TUMMEL



RIVER TUMMEL



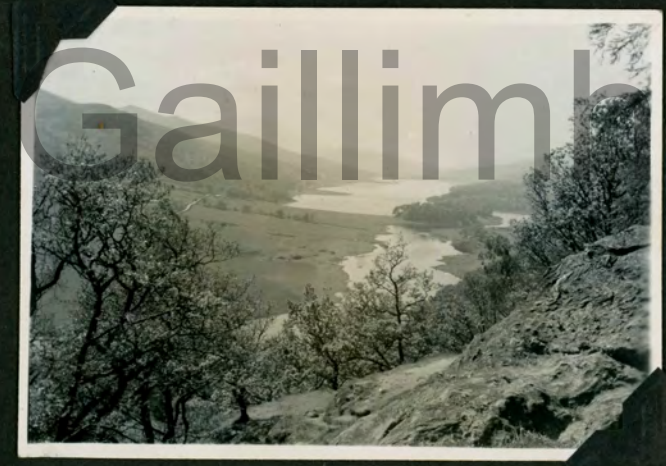
THE RIVER TUMMEL



LOCH TUMMEL



LOCH TUMMEL



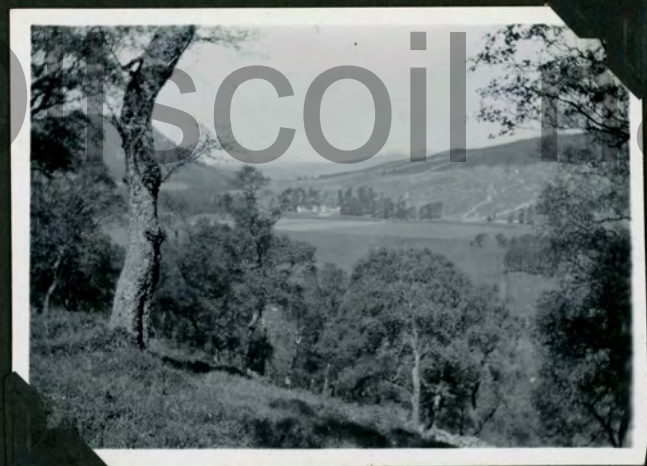
QUEENS VIEW. LOCH TUMMEL.



NR. SPITALS OF GLEN SHEE.



RIVER DEE, BRAEMAR. ABERDEEN.



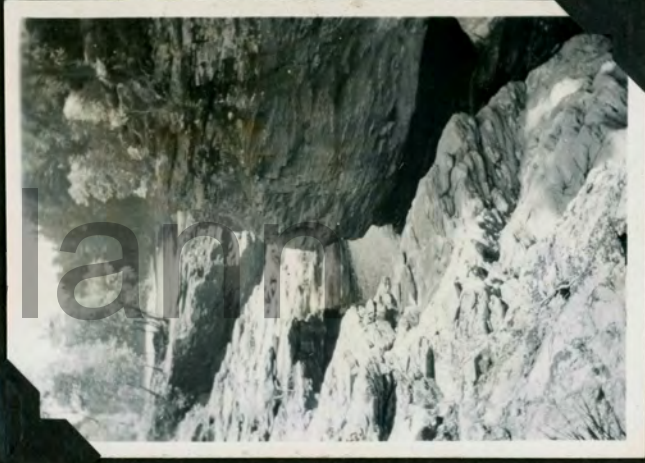
ON THE BRAEMAR - LINN OF DEE RD.



ABOVE THE LINN OF DEE.



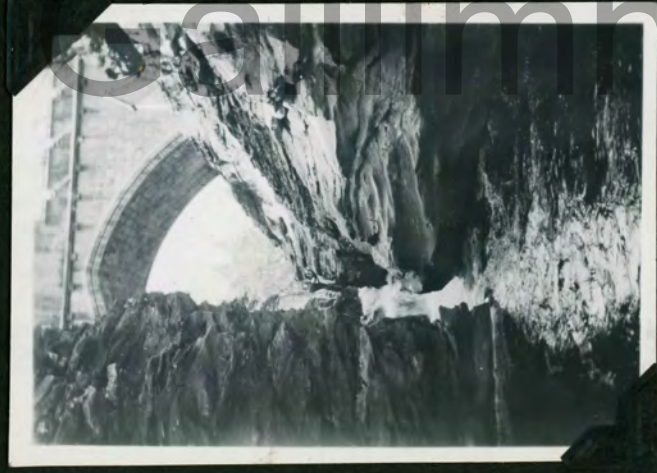
THE LINN OF DEE



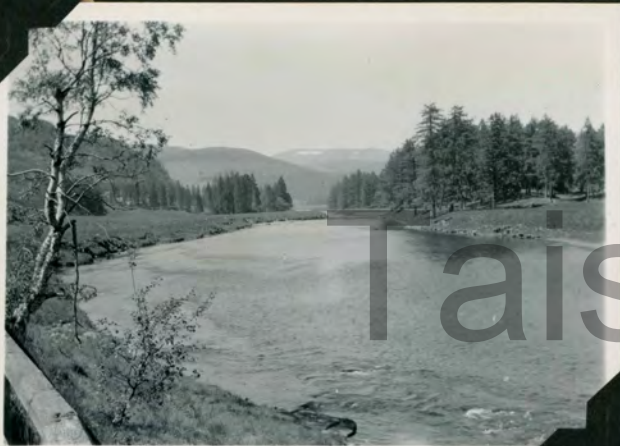
THE LINN OF DEE



THE LINN OF DEE



THE LINN OF DEE



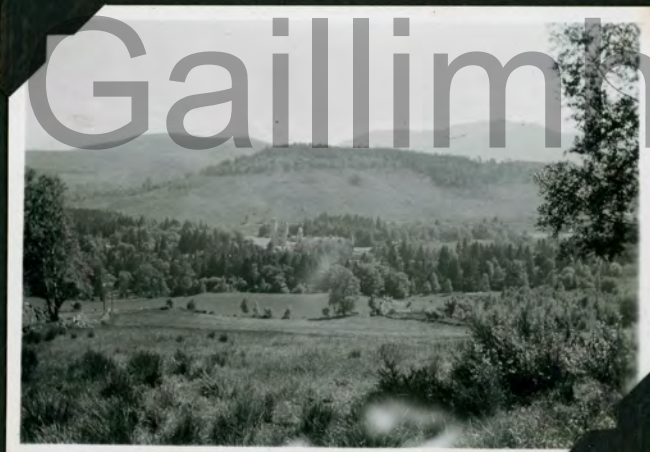
THE RIVER DEE, NEAR BRAEMAR



RIVER DEE, OLD BRIDGE OF DEE, AND LOCHNAGAR,
FROM THE NEW BRIDGE, NEAR BALMORAL.



RIVER DEE, NEAR BALMORAL



BALMORAL CASTLE AND LOCHNAGAR MT.



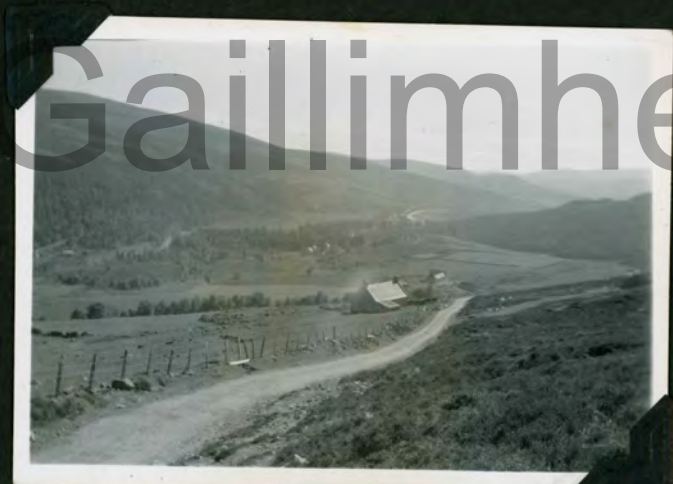
LOOKING TOWARDS "THE ROYAL MILE", BALMORAL.



THE KING'S "COUNTRY COTTAGE".



ON THE WAY TO COCKBRIDGE AND TOMINTOUL.



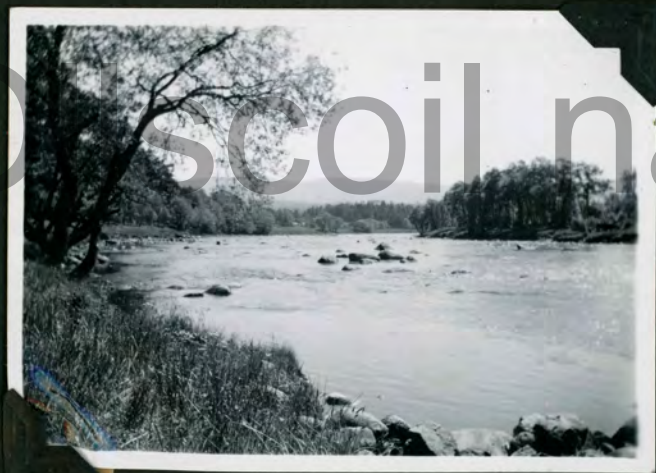
VIEW FROM THE TOP OF THE HILL.



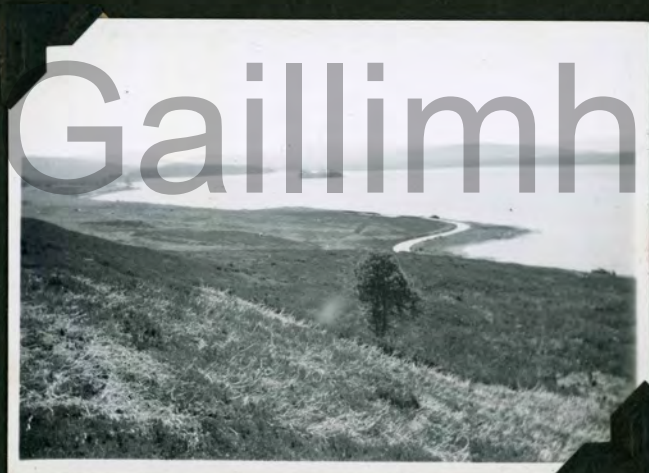
COCKBRIDGE, ON THE WAY TO TOMINTOUL



SPEY BRIDGE, OVER THE RIVER STRATH
NEAR GRANTOWN, MORAYSHIRE.



THE RIVER STRATH, BY SPEY BRIDGE.



LOCHINDORB.



NEAR FERNESSE, NAIRNSHIRE.



CLAVA CAIRNS AND STANDING STONES,
BURIAL GROUND.



RIVER BEAULY, ON THE WAY TO GLEN AFFRIC



RIVER BEAULY.



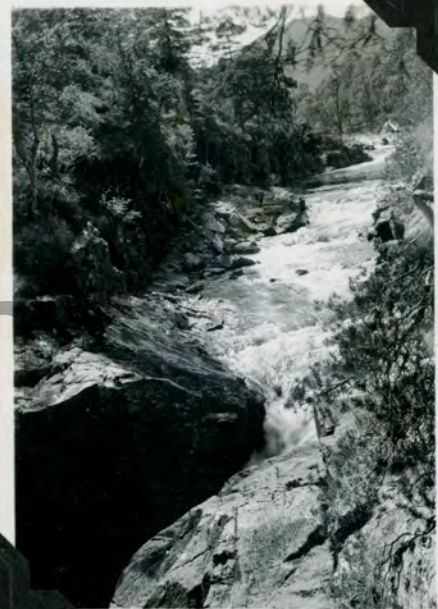
GLEN AFFRIC, INVERNESS.



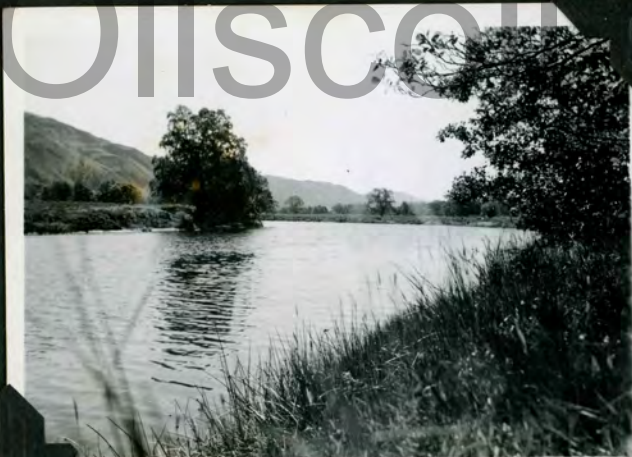
DOG FALLS, IN GLEN AFFRIC.



DOG FALLS



DOG FALLS



RIVER GLASS, STRATH GLASS.



LOCH BEINN A MHEADHOIN



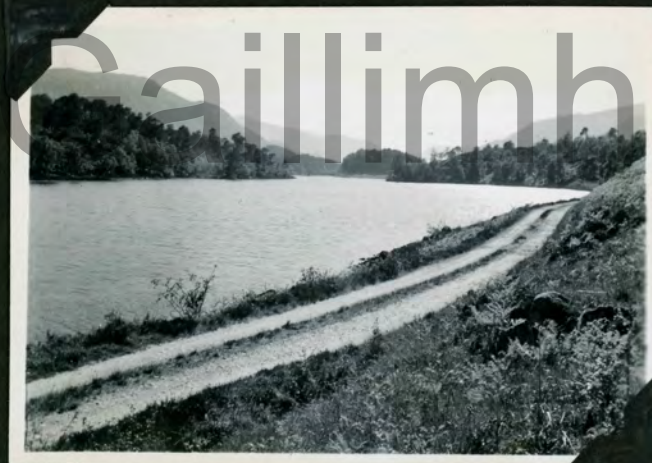
LOCH BEINN A MHEABHOIN.



LOCH BEINN A MHEABHOIN, AND
CARN GLAS LOCHDARACH,



NEAR LOCH AFFRIC.



LOCH AFFRIC



LOCH AFFRIC, AND CARN GLAS LOCHDARROCH.



LOCH AFFRIC AND SGURR NA LAPAICH,
BY THE LODGE.



BY LOCH AFFRIC,



LOCH NESS, NEAR LEWISTON.



LOCH NESS, INVERNESS - FORT AUGUSTUS RD.



URQUHART CASTLE, BY LOCH NESS.



URQUHART CASTLE, BY LOCH NESS.



LOCH NESS, INVERNESS - FORT AUGUSTUS RD.



LOCH NESS, INVERNESS - FT. AUGUSTUS RD.
AUGUSTUS.



OLD BRIDGE OVER RIVER MORISTON, AT
INVERMORISTON.



RIVER MORISTON, FROM THE NEW BRIDGE,
INVERMORISTON.



LOCH NESS, NEAR FORT
AUGUSTUS.



THE LOCK GATES, AT FORT [REDACTED] &
AUGUSTUS.



LOCH OICH, FORT [REDACTED] FORT WILLIAM RD.
AUGUSTUS -



LOCH LOCHY, FORT [REDACTED] - FORT WILLIAM RD.
AUGUSTUS -



LOCH LOCHY.



A RIVULET, BY LOCH LOCHY.



LOCH LOCHY, FORT [REDACTED] - FORT WILLIAM RD.
AUGUSTUS -



BEN NEVIS RANGE, NEAR SPEAN BRIDGE.



BEN NEVIS RANGE, NEAR SPEAN BRIDGE.



A VIEW OF FORT WILLIAM.



LOOKING TOWARDS GLEN NEVIS AT
THE START OF THE ASCENT OF BEN NEVIS
4,406 FT.



LOOKING DOWN AT GLEN NEVIS YOUTH HOSTEL.



A LITTLE HIGHER, AND STILL CLIMBING.



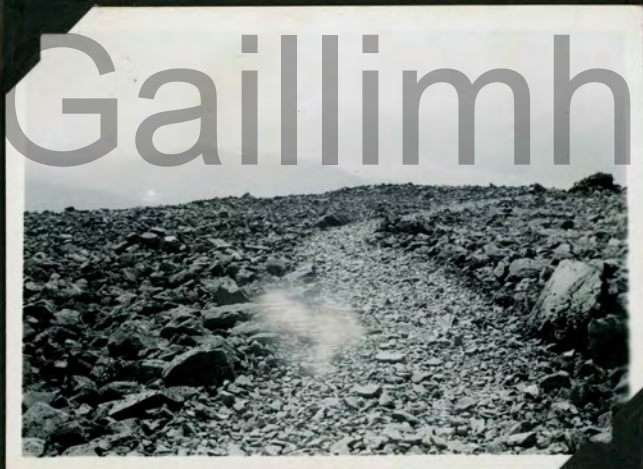
HALFWAY UP



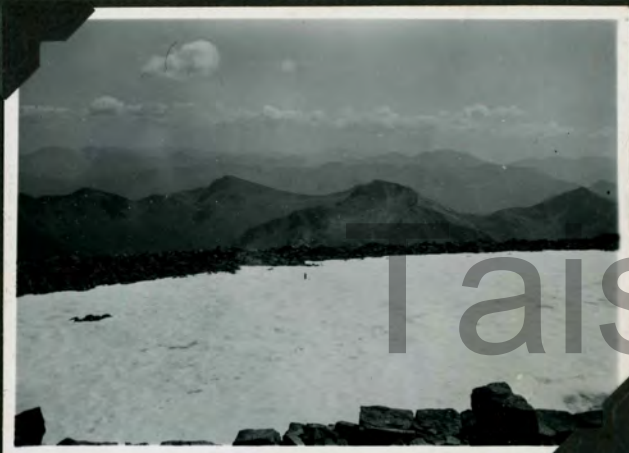
LOCHAN MEALL AN T SUIDHE



STILL GOING UP. LOCH LINNHE AND
LOCH EIL DOWN BELOW.



THIS IS THE PONY TRACK.



THE SUMMIT. 4406 FT.



THE NORTH FACE.



WEATHERWORN GRANITE ROCK EDGE



GLEN NEVIS

THE LOWER
FALLS,
RIVER
NEVIS.



ROCKS IN THE
RIVER NEVIS,
IN THE GLEN.



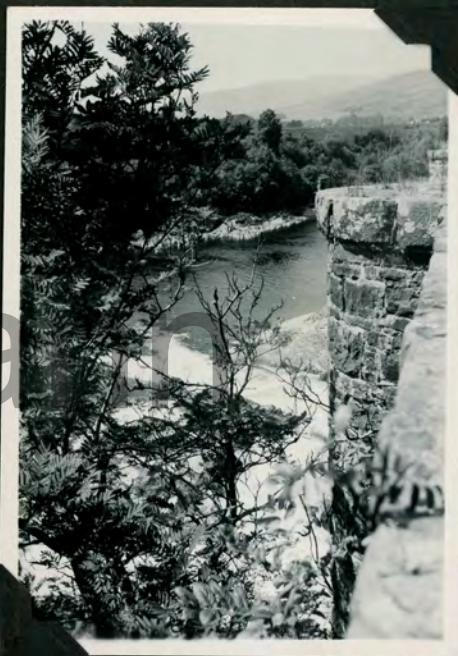
GLEN NEVIS



NEAR ROYBRIDGE



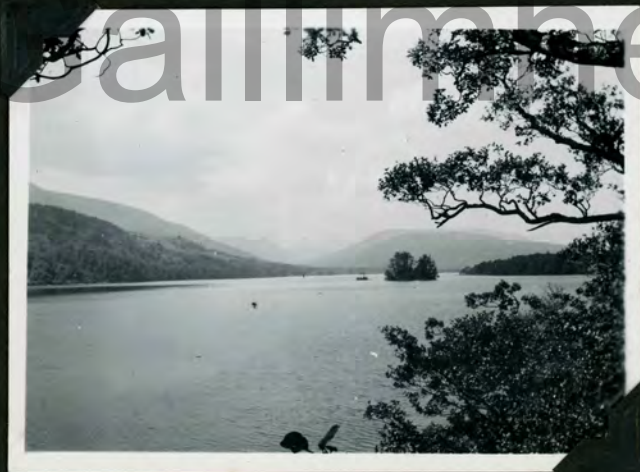
RIVER SPEAN, AND BRIDGE OF MUCOMIR.



RIVER SPEAN, AND FALLS OF MUCOMIR,
FROM THE BRIDGE.



RIVULET AND POOL, NEAR LOCH ARKAIG



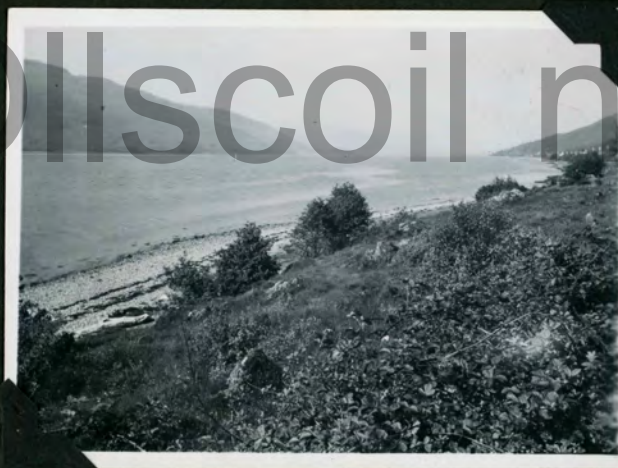
LOCH ARKAIG.



LOCK GATES, NEAR SPEAN BRIDGE.



NEAR SPEAN BRIDGE, NORTH SIDE.



LOCH LINNHE, NEAR BALLACHULISH
FERRY.



LOCH LEVEN, NEAR OICH.



LOCH LEVEN, AND GARVAN GARDH BHEINN.



LOCH LEVEN, AND GARVAN GARDH BHEINN.



LOCH LEVEN, NEAR KINLOCHLEVEN.
ARGYLL.



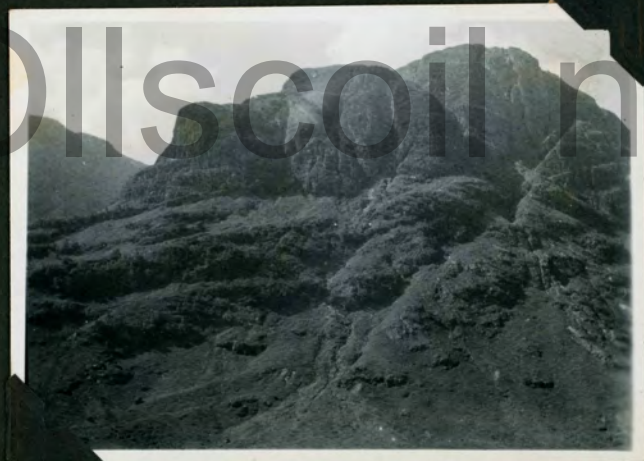
ENTRANCE TO GLEN COE, FROM VILLAGE
ROAD NEAR SCENE OF MASSACRE.



THE 3 SISTERS, GLEN COE.



THE 3 SISTERS, GLEN COE



IN GLEN COE



FROM "BLACK MOUNT" ON THE ROAD TO
TYNDRUM.



RIVER DOCHART, KILLIN, PERTH.



RIVER DOCHART, KILLIN



LOCH TAY, NEAR KILLIN.



LOCH TAY, NEAR LOWER,



LOCH TAY, NEAR LAWER
END OF THE TOUR.



A FARM, ON THE SHORES OF LOCH TAY.



OLD MILL ON RIVER CHELME, NEAR FELSTED,
ESSEX.



WOODLAND, NEAR LISAHALLY, LONDONERRY
IRELAND.



NEAR LISAHALLY



FROM THE BRIDGE.



NEAR LISAHALLY



ST. JOHN'S POINT, CO. DOWN.

1948 TOUR. SCOTLAND. THE LOWLANDS. JUNE 13TH - 28TH.



JEDBURGH ABBEY RUINS (12TH. CENTURY)
ROXBURGH.

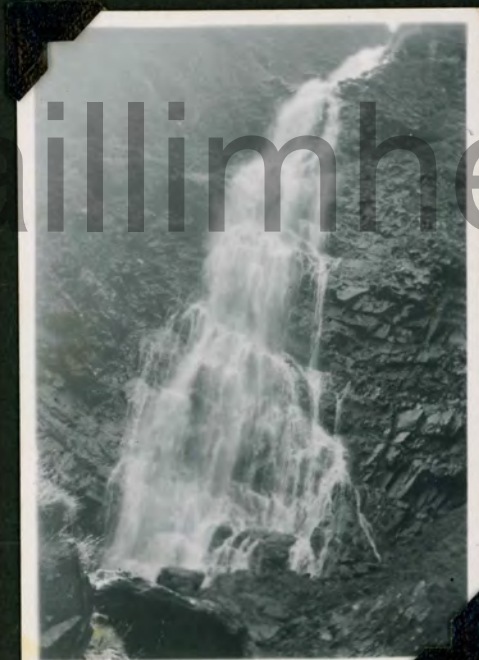


KELSOR VILLAGE AND RIVER TWEED



KELSOE ABBEY AND BRIDGE OVER THE TWEED

WATERFALL OFF
THE ROAD BETWEEN
COPPERCLOUGH AND
MOFFAT.
SELKIRK.





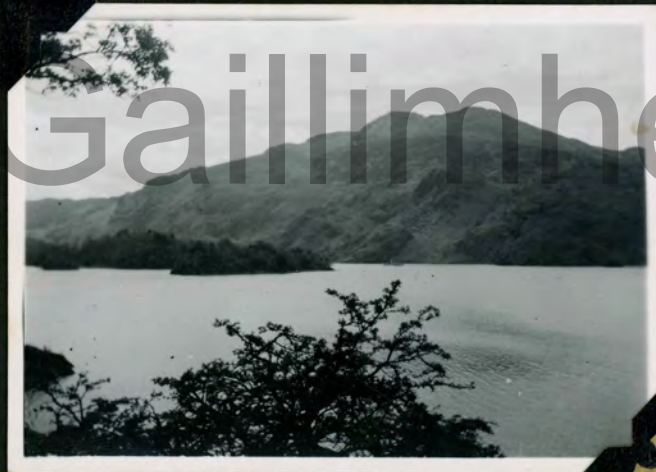
MELROSE ABBEY RUINS, ROXBURGH



ETTRICK WATER, BETWEEN SELKIRK + YARROW
CHURCH, SELKIRK.



RIVER TWEED, NEAR STOBO STATION
PEEBLES.



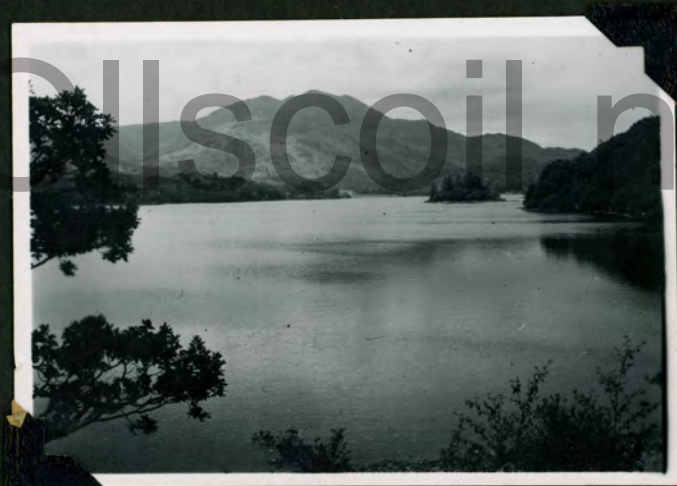
LOCH KATRINE AND BEN VENUE.
PERTH.



LOCH KATRINE



LOCH KATRINE



LOCH ACHRAY



LOCH KATRINE.



IN GLEN ARKLET, ON THE ROAD TO
INVERNAID, STIRLING.



GLEN ARKLET



GLEN ARKLET



LOCH ARKLET



LOCH LOMOND AND BEN LOMOND,
FROM TARBET, DUMBARTON.



LOCH LOMOND. F.L.



PADDLE STEAMER ON LOCH LOMOND.



WEMYSS BAY, BETWEEN GOURROCK AND
LARCS, Ayr.

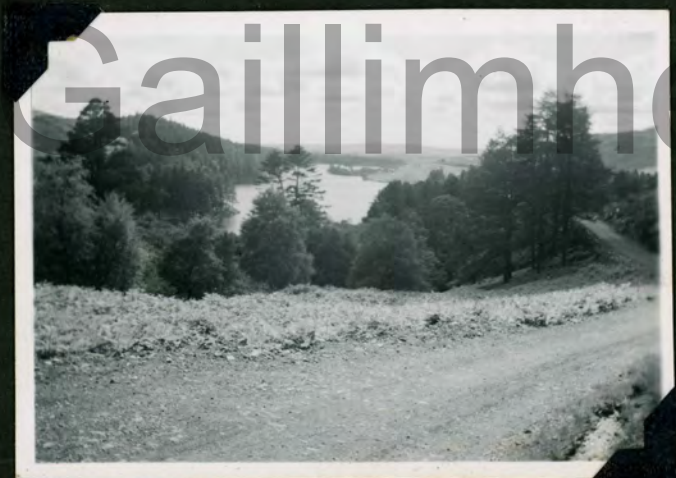


NEAR ROWANTREE
SCHOOL, BETWEEN
BARR & GLEN TROOL.

ON HEATHERY HILL, ON ROAD OUT OF
NEW CUMNOCK TO DALMELLINGTON. AYR.



LOCH TROOL. KIRKCUDBRIGHT.



LOCH TROOL.



NEAR HEAD OF LOCH TROOL.



BLADNOCH BRIDGE, ANCIENT PACKHORSE
BRIDGE, NEAR NEWTON STEWART, WICKTOWN.



RIVER DEE NEAR NEW GALLOWAY STATION.
KIRKCUDBRIGHT.



ON THE LANE WAY BETWEEN BALLANTRAE
TO STRANRAER, AILSA CRAIG FAINTLY ON
HORIZON. AYR.



WOODHALL LOCH, NEAR LAURIESTON,
ON THE ROAD TO NEW GALLOWAY.



RIVER AND BRIDGE OF DEE.



NEW GALLOWAY TOWN AND
WAR MEMORIAL.



KEN LOCH, NEAR NEW GALLOWAY.
END OF TOUR.

EASTER TOUR 1949

WALES.

APRIL 15TH.-18TH.



RIVER WYE, FROM SYMONDS YAT,
GLOUCESTER.



RIVER WYE, FROM SYMONDS YAT.



JOYFORD VILLAGE



VILLAGE OF CWMYOY, ON HATTERAL
HILL, NEAR LLANTHONY,
MONMOUTHSHIRE

ERRIMAR SERIES
No. 472
MADE IN ENGLAND

