

Taisclann

Oisín Ó Súilleabháin

Photographs

1954 TOUR . DEVON AND CORNWALL JUNE 13TH - 27TH.



STONE CIRCLE AT AVEBURY,
WILTSHIRE.



COUNTRY NEAR LYNTON,
DEVON



WIDEMOUTH SAND AND COAST,
NEAR BUDE, CORNWALL.



MILLOOK HAVEN, AND FOXHOLE POINT,
NEAR BUDE, CORNWALL.



MILLOOK HAVEN, AND FOXHOLE POINT,
NEAR BUDE
CORNWALL.



ON THE SHORE AT PERRANPORTH,
CORNWALL.



WAVE-WORN
CLIFFS, AT
PERRANPORTH,
CORNWALL



THE CLIFFS AT PERRANPORTH,
CORNWALL.



THE COAST FROM RESKATEAGE DOWNS,
NEAR PORTREATH, CORNWALL



DEADMAN'S COVE, FROM RESKATEAGE
DOWNS, CORNWALL,



HELL'S MOUTH,
HUDDER DOWN,
NEAR HAYLE,
CORNWALL,



HELL'S MOUTH, AT HUDDER DOWN,
CORNWALL.



FISHING COVE, HUDDER DOWN,
NEAR HAYLE, CORNWALL.

GURNARD'S
HEAD, NEAR
TREREEN,
CORNWALL.



WAVES BREAKING ON ROCKS AT
THE END OF GURNARD'S HEAD,
CORNWALL.



COASTLINE TO THE WEST OF GURNARD'S
HEAD, CORNWALL.



THE IRISH LADY, AND LANDS' END,
CORNWALL.



GAMPER BAY, AND LANDS' END,
CORNWALL.



LANDS' END, AND LONGSHIPS LIGHTHOUSE,
IN THE DISTANCE,
CORNWALL.



GAMPER BAY, FROM TREVESCAN
CLIFFS
CORNWALL.



LAND'S END. 'THE END'.
CORNWALL.



PORHURNO BEACH, TREEN.
CORNWALL.



LOGAN ROCK CLIFFS, AT TREEN,
CORNWALL.



COUNTRY SCENE AT TREEN,
CORNWALL.



CARTHILLIAN COVE, NEAR
THE LIZARD, CORNWALL.



PENTREATH BEACH AND GULL ROCK,
NEAR KYNANCE COVE, CORNWALL.



GULL ROCK AND ASPARAGUS ISLAND,
NEAR KYNANCE COVE, CORNWALL.



LITTLE ROAD BETWEEN MANACCAN,
AND MUDGEON, CORNWALL.



COUNTRY, NEAR POLMENNA,
CORNWALL.

DOWN TO
HEMMICK BEACH,
FROM
BOSWINGER.
CORNWALL.



HEMMICK BEACH, AND COAST,
FROM PENARE, CORNWALL.



COUNTRY SCENE, NEAR COUCHMILL,
CORNWALL.



ST MARTINS CHURCH, NEAR
EAST LOOE, CORNWALL.



LANTIVET BAY, FROM LANSALLOS
CLIFF, CORNWALL.



BLACKBROOK RIVER, NEAR
PRINCETOWN, DARTMOOR, DEVON.



CHERRY BROOK, AND ROAD OVER DARTMOOR
DEVON.



WEST DART RIVER, NEAR HEXWORTHY,
DARTMOOR, DEVON.



THE TRACK DOWN TO MIDDLESTOKE FARM
NEAR HOLNE, DARTMOOR, DEVON.



FARMHOUSE AND COUNTRY BETWEEN
HOLNE AND BUCKFAST, DEVON.



CLAPPER BRIDGE OVER EAST DART RIVER
AT POSTBRIDGE, DARTMOOR, DEVON.

1952 TOUR. NORTHERN IRELAND.

7TH JUNE - 22ND.



ON THE GLENARIFF ROAD.



ON THE ROAD TO GLENARIFF.



ESS-NA-CRUB FALLS, IN GLENARIFF.

WALKING
IN
GLENARIFF.
CO. ANTRIM.





IN GLENARIFF



ESS-NA-LARAGH FALLS, MIDDLE AND UPPER.



IRON BRIDGE, AND FAWCETT FALLS.



BALLYCASTLE SANDS. CO. ANTRIM.



Ollscoil na Gaillimhe

FIVE VIEWS OF "THE GOBBINS" CLIFF WALK. CO. ANTRIM.



COAST AND
SMALL HARBOUR,
NEAR BALLINTOY,
CO. ANTRIM.



FROM A TRACK BEHIND BALLYCASTLE,
CO. ANTRIM.



CARRICK-A-REDE ISLAND



THE ROPE BRIDGE



COASTLINE AT CARRICK-A-REDE.



SANDY BAY AND COAST, BALLINTOY



THE COAST FROM THE CLIFF WALK, AT
THE GIANTS CAUSEWAY.



COASTLINE AT THE GIANTS
CAUSEWAY, CO. ANTRIM.



THE ROAD TO FINNTOWN, FROM LIFFORD.
EIRE.



LOUGH FINN. CO. DONEGAL.



LOUGH FINN.



LOUGH FINN.



CUTTING PEAT, NEAR GLENTIES,
CO. DONEGAL.



RIVER FINN, NEAR GLENTIES.



COAST ROAD TO MACHERA, NEAR
GLENTIES.



THE ROAD TO MACHERA.
CO. DONEGAL. EIRE.



NEAR MAGHERA, CO. DONEGAL.



ON THE MAGHERA - GLENTIES ROAD.



DOWN TO THE COAST AT MAGHERA.

COASTAL
WATERFALL,
NEAR MAGHERA,
CO. DONEGAL,





' INTO THE BLUE, FROM MAGHERA



LOOKING DOWN TO MAGHERA



AT THE TOP OF THE PASS, FROM MAGHERA.



THE ATLANTIC COAST, NEAR SLIEVE
LEAGUE CLIFFS, CO. DONEGAL.



FROM THE
BRIDGE, NEAR
KILCAR,
CO. DONEGAL.



A SANDY BAY, NEAR KILLYBEGS.



A SCENE NEAR DONEGAL.



FROM THE BRIDGE, AT BELCOO,
FERMANAGH.



LOUGH MACNEAN (LOWER) NEAR BELCOO,
FERMANAGH.



RIVER ERNE, NEAR ENNISKILLEN.



SCENE ON THE ROAD TO NEWTOWNBUTLER.
FERMANAGH, N. IRELAND. END OF TOUR.



RIVER BLACKWATER, NEAR KELS.
MEATH. EIRE.



HARVEST TIME, NEAR MANGROVE HALL,
HERTS.



RIVER MIMRAM, PANSHANGER
ESTATE.



RIVER MIMRAM, PANSHANGER ESTATE,
HERTS.



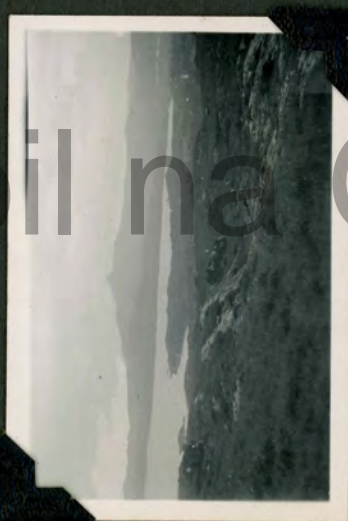
ROAD AND BRIDGE OVER PINCEY BROOK,
NEAR SHEERING, ESSEX.



RIVER SCENE NEAR GARRIGANASS CASTLE
RUINS.



RIVER LEE, NEAR INCHIGEELAH.



BANTRY BAY, NEAR INCHIGEELAH,
CORK.



SENTINEL ROCKS AND LAKE CUSHVALLA,
IN THE GAP OF DUNLOE.



COASTLINE NEAR SLEA HEAD,
DINGLE PENINSULA, KERRY.



THE AMATEUR PHOTOGRAPHER AT
WORK IN A SMALL COVE NEAR SLEA HD.
END OF TOUR.

1951 TOUR.

WALES.

JUNE 9TH - 24TH.



RESERVOIR NEAR LLANFAIR DISCOED.
MON.



AT BLAEN ONNEU. BRECON.



RIVER USK, AT LLANSANTFFREAD.
BRECON.



TAL-Y-BONT RESERVOIR, GLYN COLLWN
BRECON.



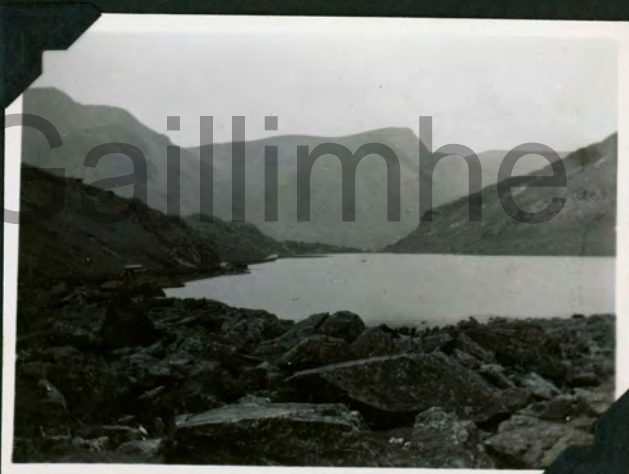
A ROCKY EDGE
OF SNOWDON.
GLASLYN AND
LLYN LLYDAW
DOWN BELOW.
3560 FT.



GLASLYN AND LLYN LLYDAW,
FROM SNOWDON



ON THE PEN-Y-PASS TRACK, FROM
SNOWDON.



LLYN OGWEN, AND CARNEDD DAFYDD,
NANT FFRANCON PASS.



PISTYLL RHAIDR,
DENBIGH.



END OF TOUR.



ST. MARY'S CHURCH, BALCOMBE,
SUSSEX.



HADHAM FORD, LITTLE HADHAM,
HERTS.



CASWELL BAY, GOWER PENINSULA
GLAM.



RHOSSILY BAY, GOWER PENINSULA
GLAM.



WORMS HEAD AND CLIFFS, KITCHEN CORNER,
RHOSSILY BAY, GLAM.



TEARS POINT, THE SOUND, GOWER PENINSULA
GLAM.



CAREW CASTLE RUINS, PEMBROKE



CAREW CASTLE RUINS, PEMBROKE.



ABER EIDDY BAY, NEAR ST. DAVID'S,
PEMBROKE.



ABER EIDDY BAY AND VILLAGE,
PEMBROKE.



COASTLINE AT ABER EDDY, NEAR ST. DAVID'S
PEMBROKE.



ABER EDDY BAY, NEAR ST. DAVID'S, PEM.



COASTAL INLETS, SEEN FROM CARN FAWR CAMP,
PEN CAER, PEMBROKE.



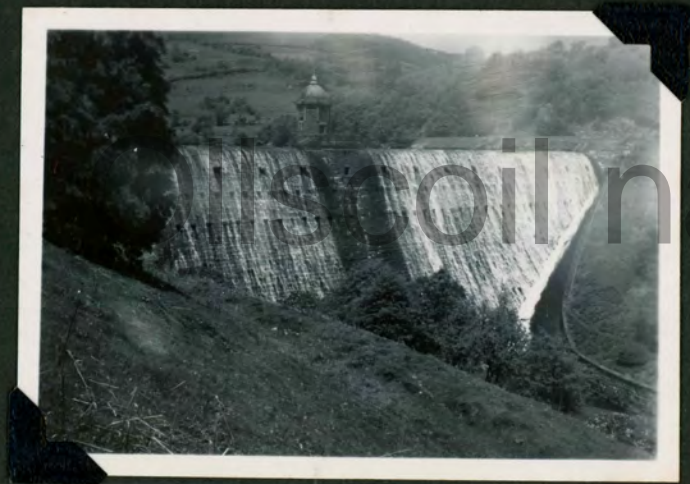
CENARTH FALLS, NEAR NEWCASTLE EMLYN.
CARMARTHEN.



RIVER TEIFI, NEAR NEWCASTLE EMLYN,
CARDIGAN.



FALLS ON THE RIVER TEIFI,
CARDIGAN.



PEN-Y-GAREG RESERVOIR DAM, ELAN VALLEY,
RADNOR.



GAREG-DDU RESERVOIR, ELAN
VALLEY.



PEN-Y-GAREG RESERVOIR, ELAN VALLEY,
RADNOR.



PEN-Y-GAREG RESERVOIR, ELAN VALLEY,
RADNOR.



RIVER TEIFI, NEAR LLANDYSSUL,
CARMARTHEN.



AFON DYSYNNI, NEAR TAL-Y-LLYN,
MERIONETH.



TAL-Y-LLYN LAKE
MERIONETH.

DOL-Y-CAE FALLS
NEAR TAL-Y-LLYN
MERIONETH



RIVER VYRNWY,
FROM THE LODGE
ROAD AT
LLWYDIARTH.
MONTGOMERY.



DINAS MINLLTH, NEAR DINAS MAWOODWY
MERIONETH.



LAKE VYRNWY,
MONTGOMERY.



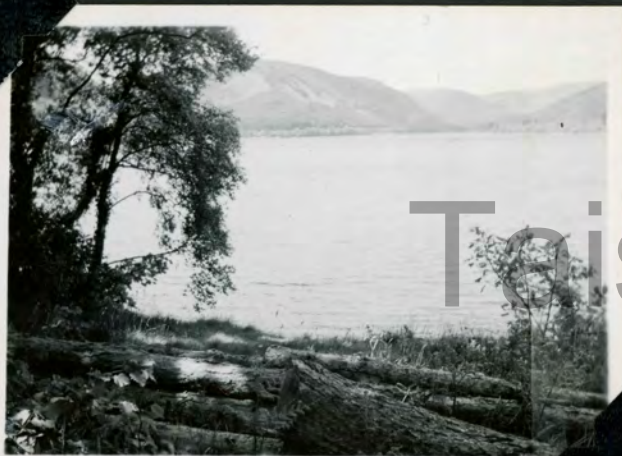
AT THE HEAD OF LAKE VYRNWY.



LAKE VYRNWY.



RIVER EUNANT AND LAKE VYRNWY.



LAKE VYRNWY, MONTGOMERY.



EUNANT VALLEY, RIVER, AND PASS,
MONTGOMERY.



AT THE HEAD OF THE EUNANT PASS,
MONTGOMERY.



NEAR BWLCH-Y-GROES, LOOKING DOWN
THE VALLEY TO DINAS MAWDDWY,
MERIONETH.



BALA LAKE, NEAR LLANGOWER,
MERIONETH.

AFON CLYWEDOG,
TORRENT WALK,
NEAR DOLGELLY,
MERIONETH.



THE TORRENT
'WALK', NEAR
DOLGELLY,
MERIONETH.



PONT ABER GLASLYN, NEAR BEDDGELERT.
CAERNARVON.



LLYN CWELLYN, NEAR CAERNARVON.

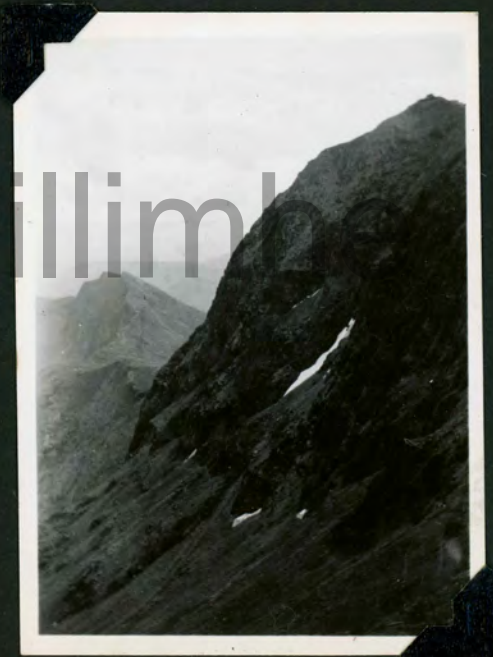


ASCENT OF MT. SNOWDON (3560 FT.) LOOKING
BACK TO LLYN PADARN AND LLANBERIS.
CAERNARVON



JUST PAST $\frac{1}{2}$ WAY. LLYN DUR ARDDU AT
THE FOOT OF CRIB-Y-BOYSGL.

SNOW ON
SNOWDON,
(Y WYDDFA).
Y LLIWEDD IN
THE BACKGROUND.





DAREN LŴYD, NEAR CAPEL Y FFIN,
CROSSING THE BLACK MTS. TO HAY.



PEN Y BEACON, ON THE TRACK TO HAY,
BRECKNOCKSHIRE.



ON THE TRACK OVER THE BLACK MTS.



LOOKING TOWARDS CAPEL Y FFIN NEAR TOP OF
CROSSING.



FROM THE TOP OF THE BLACK MTS. NEAR HAY.



RIVER WYE, NEAR LLYSWEN.



RIVER WYE, NEAR LLYSWEN.



RIVER WYE, NEAR BUILT WELLS, ON
ROAD TO RHAYADER. RADNORSHIRE.



NEAR CAMPTON,
BEDFORDSHIRE.



NEAR STANWAY, ON ROUGH ROAD TO
MORTON-IN-THE-MARSH, GLOUCESTER,
END OF TOUR.



GOLDEN CARP POND, NEAR LOXWOOD,
ON THE ROAD TO KIRDFORD, SUSSEX.



BAYFORD CHURCH, HERTFORD.



FORD BETWEEN CUBLINGTON + DUNTON, BUCKS.



GRAND UNION CANAL, NEAR STOKE HAMMOND,
BUCKS.



IN HURSTWOOD,
NEAR PEASLAKE,
SURREY.



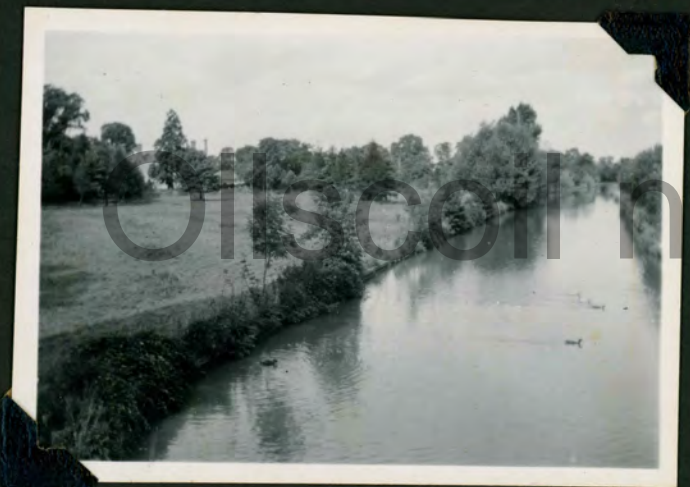
ARKESDEN CHURCH. ESSEX.



NEAR BULLS MILL. HERTFORD.



POND AND FARMHOUSE AT HOGGESTON. BUCKS.



GRAND UNION CANAL, NEAR STOKES HOUSE,
STOKES HAMMOND, BUCKS.



FARM NEAR SLIP END. HERTFORD.



RIVER OUSE, FROM PAXTON HILL,
NEAR ST. NEOTS. HUNTS.



HAMMER POND, NEAR HORSHAM. W. SUSSEX.



HIGH LAVER CHURCH. ESSEX.



NEAR TEA GREEN, ON HERTS. BORDER.



A FROSTY ROAD, NEAR WHEMPSTEAD,
HERTS.



NEAR EATON BRAY, BUCKS.



NEAR SHENLEY, HERTS.



RIVER LEA, NEAR ESSENDON,
HERTS.



RIVER MIMRAM, PANSHANGER, HERTS



APPROACHING FINCHINGFIELD, ESSEX



IN GATTON PARK (N.T.)
NEAR REIGATE, SURREY.



NEAR BARLEY, HERTS.

NORTH-EAST SCOTLAND. 12TH-26TH JUNE 1955



RIVER NORTH
ESK, NEAR
EDZELL.
ANGUS



LOCH SAUGH, KINCARDINE.



LOCH SAUGH, AND FINELLA HILL



BRIDGE OF DYE, ON THE CAIRN
OF MOUNTH RD. KINCARDINE.



FALLS OF
DESS,
KINCARDINE -
O-NEIL
ABERDEEN.



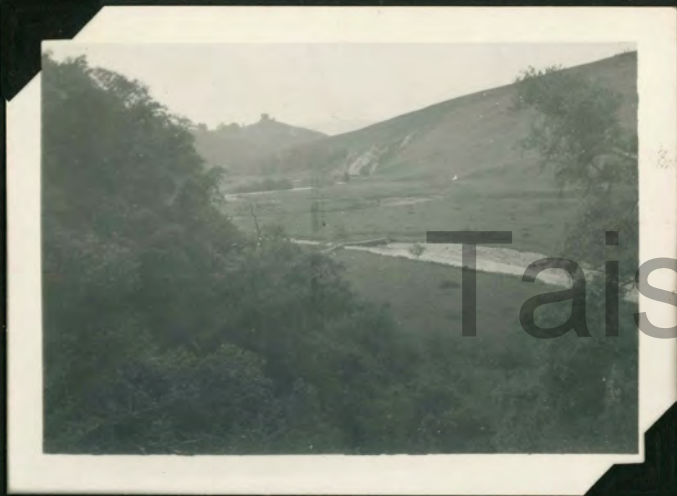
NEAR STRACHAN, CAIRN OF MOUNTH RD.,
KINCARDINE



RIVER DEE, PATARCH BRIDGE.
K-O-NEIL. ABERDEEN.



BURN OF CRAIC, NEAR CABRACH
ABERDEEN.



Taiscann



RIVER FIDDICH, BETWEEN DUFFTOWN
AND CABRACH, BANFF.

ABOVE CABRACH, BANFF.
END OF TOUR.



Ollscoil na Gaillimhe



NEAR KIMPTON, HERTFORD.

IN THE BY-PASS LANE, NORTH MIMMS.



NEAR STANSTEAD ABBOTS.

BLOSSOM - TIME

B. AND TEA ON THE LAWN



BULLS GRN. RD. NEAR TEWIN. HTS.

B. ON STATE FOREST RD. TO WATTON ^{GRN.}



SOME NEAT THATCHING



WATER END FORD. HERTS.



ST. MARY'S CHURCH,
EAST BERGHOLT. SUFFOLK.



BETWEEN WADESMILL & THUNDRIDGE.
HERTS.

1957 TOUR, DEVON AND CORNWALL. 15TH - 23RD. JUNE.



CHEDDAR GORGE, SOMERSET.



COMBE MARTIN, NORTH DEVON.



WILD PEAR BEACH, COMBE MARTIN.



MR FYRNELLS GARDEN, BERIO -
BRIDGE, CORNWALL.



MR. FYRNELLS GARDEN.



POLPERMO HARBOUR,
CORNWALL.



MORETON HAMPSTEAD, EXETER RD.,
DEVON.



NEAR EXETER,
DEVON
END OF TOUR.



SILVER LEAVES, NEAR LETTY GREEN,
HERTS.



WINTER, BRAMFIELD STATE
FOREST, HERTS.



MAY BLOSSOM, NEAR HODDESDON
HERTS.



BLOSSOM IN THE GARDEN

